

Kidney Patient Reported Experience Measure (Kidney PREM) 2023 Report Appendices

Contents

Appendix A: Responses by centre compared to 2022	3
Table A1: Centre response numbers in England compared to 2022.....	3
Table A2: Centre response numbers in Northern Ireland compared to 2022	4
Table A3: Centre response numbers in Scotland compared to 2022.....	4
Table A4: Centre response numbers in Wales compared to 2022.....	5
Figure A1: Kidney PREM responses by treating centre in 2023 and 2022	6
Appendix B: Age ranges across modalities.....	7
Table B1: Age of Kidney PREM 2023 participants by treatment modality.....	7
Appendix C: Proportion of Kidney PREM responses for each ethnicity group by centre	8
Table C1: Ethnicity by centre (England).....	8
Table C2: Ethnicity by centre (Northern Ireland)	9
Table C3: Ethnicity by centre (Scotland).....	9
Table C4: Ethnicity by centre (Wales).....	10
Table C5: Ethnicity by country.....	10
Appendix D: Proportion of Kidney PREM responses for each treatment group by centre.....	11
Table D1: Treatment proportion by centre (England)	11
Table D2: Treatment proportion by centre (Northern Ireland).....	12
Table D3: Treatment proportion by centre (Scotland)	13
Table D4: Treatment proportion by centre (Wales)	13
Table D5: Treatment proportion by country	13
Appendix E: Characteristics of participants receiving help	14
Table E1: Characteristics of individuals receiving help to complete Kidney PREM.....	14
Table E2: Reason for receiving help to complete Kidney PREM by treatment.....	14
Appendix F: First languages spoken by Kidney PREM participants.....	15

Table F1: Full list of languages spoken where English is not the primary language	15
Appendix G: Participant partial postcodes.....	16
Table G1: Results from univariable regression analyses:	16
Appendix H: Centre results of additional questions	17
Table H1: Centre results for ‘Who are your kidney clinic letters sent to?’	17
Table H2: Centre results for ‘Have your kidney team talked to you about your wellbeing in the last year? For example: benefits/housing/mental health.’	19
Table H3: Centre results for ‘Has anyone from your unit talked to you about last year's Kidney PREM report?’	21
Appendix I: Kidney PREM 2022 treatment-level theme scores	23
Table I1: Median theme scores and interquartile ranges (IQRs) by modality.....	23
Appendix J: Unit abbreviations, satellites and response numbers	25
Table J1: England unit abbreviations, satellites and response numbers.....	25
Table J2: Northern Ireland unit abbreviations, satellites and response numbers	30
Table J3: Scotland unit abbreviations, satellites and response numbers.....	30
Table J4: Wales unit abbreviations, satellites and response numbers.....	30

Appendix A: Responses by centre compared to 2022

Table A1: Centre response numbers in England compared to 2022

Country	Region	Centre	Total 2023	Total 2022	Change from 2022		% of KRT population
					N	%	
England	East of England	Camb	35	85	-50	-58.8%	2.1%
		Colchr	15	1	+14	1400.0%	10.3%
		EssexMS	217	227	-10	-4.4%	24.2%
		Ipswi	78	21	+57	271.4%	18.6%
		Norwch	52	103	-51	-49.5%	6.6%
		Stevng	347	421	-74	-17.6%	34.2%
England	London	Carsh	359	453	-94	-20.8%	18.8%
		L Barts	502	310	+192	61.9%	18.3%
		L Guys	150	346	-196	-56.6%	6.5%
		L Kings	228	378	-150	-39.7%	17.1%
		L Rfree	863	520	+343	66.0%	36.3%
		L St.G	148	215	-67	-31.2%	17.1%
		L West	318	445	-127	-28.5%	8.9%
England	Midlands	Bham	270	251	+19	7.6%	8.2%
		Covnt	79	207	-128	-61.8%	7.1%
		Derby	291	148	+143	96.6%	42.2%
		Dudley	26	6	+20	333.3%	6.5%
		Leic	665	549	+116	21.1%	25.2%
		Nottm	182	75	+107	142.7%	14.9%
		Shrew	168	116	+52	44.8%	38.0%
		Stoke	69	14	+55	392.9%	8.2%
		Wolve	32	39	-7	-17.9%	4.6%
England	North East & N Cumbria	Carlis	11	25	-14	-56.0%	3.6%
		Middlbr	187	75	+112	149.3%	19.6%
		Newc	274	384	-110	-28.6%	22.3%
		Sund	279	210	+69	32.9%	51.0%
England	North West	Liv Ain	124	140	-16	-11.4%	47.0%
		Liv Roy	148	79	+69	87.3%	12.3%
		M RI	74	20	+54	270.0%	3.6%
		Prestn	208	98	+110	112.2%	15.1%
		Salford	186	63	+123	195.2%	15.3%
		Wirral	58	48	+10	20.8%	14.1%
England	South East	Brightn	502	297	+205	69.0%	46.0%
		Kent	308	259	+49	18.9%	25.8%
		Oxford	238	309	-71	-23.0%	11.9%
		Ports	121	84	+37	44.0%	6.2%
		Redng	251	262	-11	-4.2%	28.6%

Table A1: Centre response numbers in England compared to 2022 (cont.)

Country	Region	Centre	Total 2023	Total 2022	Change from 2022		% of KRT population
					N	%	
England	South West	Bristol	153	84	+69	82.1%	10.2%
		Dorset	163	150	+13	8.7%	20.7%
		Exeter	542	199	+343	172.4%	49.0%
		Glouc	115	124	-9	-7.3%	21.1%
		Plymth	96	215	-119	-55.3%	17.5%
		Truro	142	163	-21	-12.9%	30.8%
England	Yorkshire & Humber	Bradfd	124	152	-28	-18.4%	16.9%
		Donc	145	65	+80	123.1%	42.8%
		Hull	60	31	+29	93.5%	6.5%
		Leeds	224	138	+86	62.3%	12.6%
		Sheff	66	137	-71	-51.8%	4.4%
		York	12	89	-77	-86.5%	2.1%

Table A2: Centre response numbers in Northern Ireland compared to 2022

Country	Centre	Total 2023	Total 2022	Change from 2022		% of KRT population
				N	%	
Northern Ireland	Antrim	9	23	-14	-60.9%	3.1%
Ireland	Belfast	35	84	-49	-58.3%	3.8%
	Newry	66	53	+13	24.5%	23.7%
	Ulster	4	101	-97	-96.0%	2.0%
	West NI	119	56	+63	112.5%	35.4%

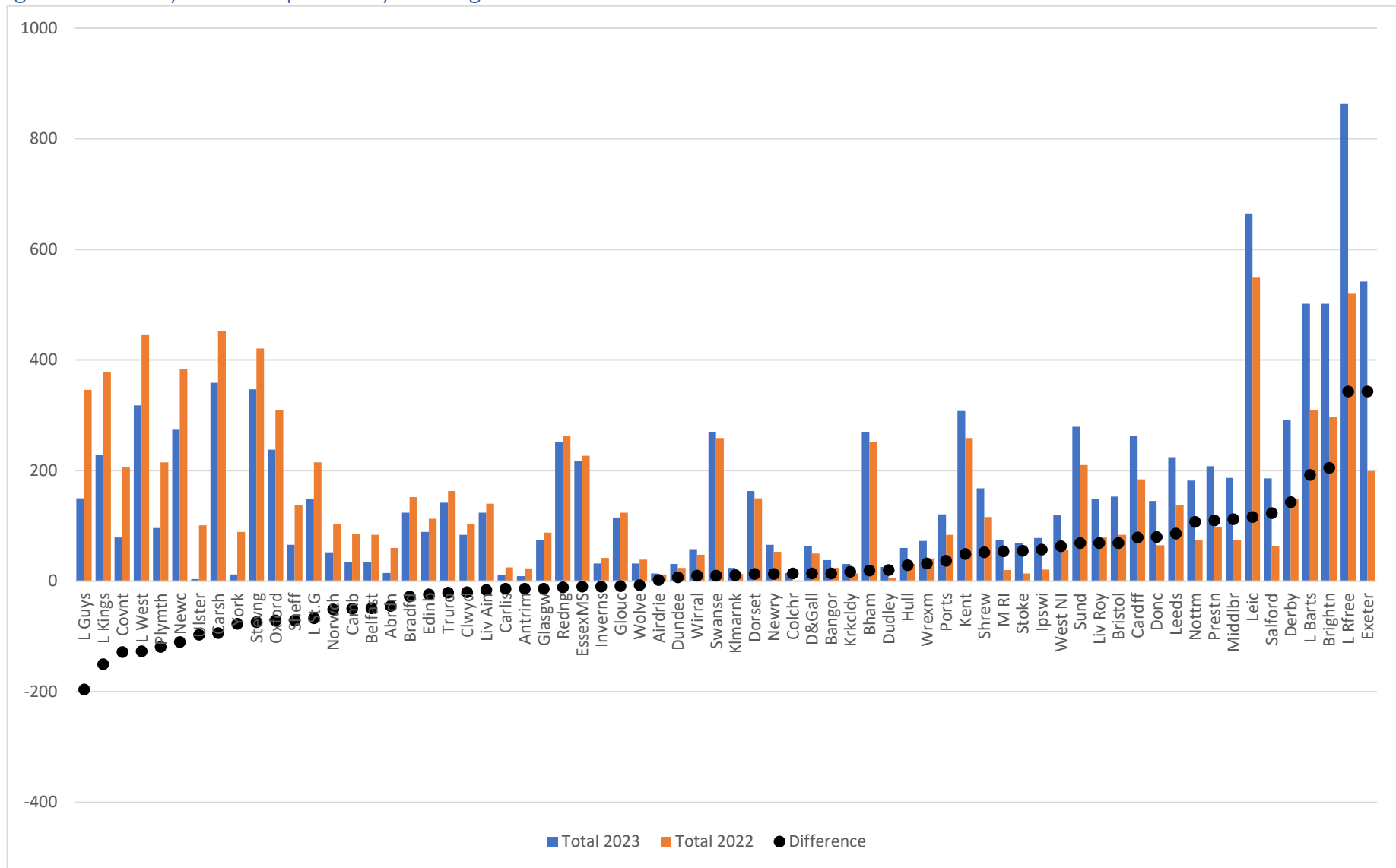
Table A3: Centre response numbers in Scotland compared to 2022

Country	Centre	Total 2023	Total 2022	Change from 2022		% of KRT population
				N	%	
Scotland	Abrdn	15	60	-45	-75.0%	2.6%
	Airdrie	14	12	+2	16.7%	2.8%
	D&Gall	64	50	+14	28.0%	41.8%
	Dundee	31	24	+7	29.2%	7.5%
	Edinb	89	113	-24	-21.2%	9.6%
	Glasgw	74	88	-14	-15.9%	4.0%
	Inverns	32	42	-10	-23.8%	11.6%
	Klmarnk	24	13	+11	84.6%	6.6%
	Krkldy	31	14	+17	121.4%	10.5%

Table A4: Centre response numbers in Wales compared to 2022

Country	Centre	Total 2023	Total 2022	Change from 2022		% of KRT population
				N	%	
Wales	Bangor	38	24	+14	58.3%	17.5%
	Cardff	263	184	+79	42.9%	15.5%
	Clwyd	84	104	-20	-19.2%	41.2%
	Swanse	269	259	+10	3.9%	31.5%
	Wrexm	73	41	+32	78.0%	24.6%

Figure A1: Kidney PREM responses by treating centre in 2023 and 2022



Appendix B: Age ranges across modalities

Table B1: Age of Kidney PREM 2023 participants by treatment modality

Age (years)	CKD (non-KRT)		Peritoneal	
	2023	2022	2023	2022
16-21	26 (1.5%)	28 (1.8%)	9 (1.5%)	11 (1.6%)
22-30	62 (3.7%)	46 (2.9%)	17 (2.7%)	17 (2.4%)
31-40	122 (7.3%)	113 (7.1%)	44 (7.1%)	38 (5.4%)
41-55	333 (19.8%)	269 (16.8%)	104 (16.8%)	120 (16.9%)
56-64	340 (20.3%)	319 (20.0%)	124 (20.0%)	124 (17.5%)
65-74	430 (25.6%)	370 (23.2%)	148 (23.9%)	187 (26.4%)
75-84	305 (18.2%)	375 (23.5%)	150 (24.2%)	188 (26.6%)
85+	60 (3.6%)	77 (4.8%)	24 (3.9%)	23 (3.2%)
Missing	-	8	-	17
Total	1,678	1,605	620	725

Age (years)	Home HD		Satellite HD		Centre HD	
	2023	2022	2023	2022	2023	2022
16-21	2 (1.0%)	1 (0.5%)	16 (0.4%)	9 (0.3%)	27 (0.8%)	30 (1.0%)
22-30	3 (1.4%)	3 (1.6%)	97 (2.5%)	71 (2.3%)	117 (3.4%)	70 (2.4%)
31-40	21 (10.1%)	19 (9.8%)	212 (5.5%)	147 (4.8%)	227 (6.6%)	162 (5.5%)
41-55	69 (33.2%)	62 (32.1%)	684 (17.7%)	527 (17.1%)	686 (20.0%)	549 (18.8%)
56-64	69 (33.2%)	51 (26.4%)	795 (20.6%)	655 (21.2%)	702 (20.5%)	594 (20.3%)
65-74	31 (14.9%)	33 (17.1%)	956 (24.7%)	784 (25.4%)	794 (23.2%)	701 (24.0%)
75-84	13 (6.3%)	22 (11.4%)	889 (23.0%)	736 (23.8%)	735 (21.4%)	661 (22.6%)
85+	0 (0.0%)	2 (1.0%)	215 (5.6%)	157 (5.1%)	140 (4.1%)	156 (5.3%)
Missing	-	5	-	115	-	126
Total	208	198	3,864	3,201	3,428	3,049

Age (years)	Transplant		TOTAL	
	2023	2022	2023	2022
16-21	9 (0.5%)	13 (0.7%)	89 (0.8%)	92 (0.9%)
22-30	62 (3.4%)	56 (3.2%)	358 (3.1%)	271 (2.5%)
31-40	172 (9.3%)	156 (8.8%)	798 (6.9%)	647 (6.1%)
41-55	526 (28.4%)	507 (28.6%)	2,402 (20.6%)	2,084 (19.5%)
56-64	471 (25.5%)	500 (28.2%)	2,501 (21.5%)	2,303 (21.6%)
65-74	469 (25.4%)	416 (23.5%)	2,828 (24.3%)	2,592 (24.3%)
75-84	136 (7.4%)	117 (6.6%)	2,228 (19.1%)	2,219 (20.8%)
85+	4 (0.2%)	6 (0.3%)	443 (3.8%)	461 (4.3%)
Missing	-	9	-	394
Total	1,849	1,780	11,647	11,063

Appendix C: Proportion of Kidney PREM responses for each ethnicity group by centre

Tables C1-C5 show the proportions of Kidney PREM respondents in each ethnicity group by treating centre, excluding missing values and those who stated, 'rather not say'. Centres with fewer than seven responses are excluded. All participants are counted in the Kidney PREM figures, including those not receiving kidney replacement therapy (KRT), although percentages in the yellow highlighted columns (UKRR: UK Renal Registry) reflect only the KRT population centre proportions as at the end of 2021. UKRR data are only shown when at least 80% were returned by kidney centres. Frequencies and proportions of Kidney PREM returns between 2019 and 2023 are available for each centre on the Kidney PREM portal at: <https://ukkidney.org/audit-research/data-portal/prem>

Table C1: Ethnicity by centre (England)

Region	Centre	Asian		Black		Mixed		Other		White	
		Kidney PREM	UKRR	Kidney PREM	UKRR	Kidney PREM	UKRR	Kidney PREM	UKRR	Kidney PREM	UKRR
East of England	Camb	3.0%	5.9%	3.0%	2.5%	0.0%	1.0%	0.0%	0.6%	93.9%	90.0%
	Colchr	13.3%	-	6.7%	-	6.7%	0.0%	0.0%	-	73.3%	96.4%
	EssexMS	5.9%	5.9%	9.6%	5.3%	0.5%	1.7%	1.6%	1.6%	82.4%	85.3%
	Ipswi	1.3%	2.2%	3.8%	4.5%	0.0%	-	0.0%	10.4%	94.9%	82.8%
	Norwch	7.7%	1.2%	0.0%	0.9%	1.9%	-	0.0%	-	90.4%	96.8%
	Stevng	19.5%	17.1%	13.4%	9.2%	1.5%	2.0%	1.7%	0.8%	63.8%	70.9%
London	Carsh	15.4%	17.3%	18.0%	11.2%	1.4%	2.6%	0.6%	3.2%	64.6%	65.7%
	L Barts	24.8%	35.3%	26.4%	25.3%	1.2%	3.7%	3.3%	3.5%	44.3%	32.3%
	L Guys	4.8%	10.4%	21.9%	27.3%	2.7%	1.9%	1.4%	2.6%	69.2%	57.8%
	L Kings	12.1%	14.5%	34.5%	38.8%	3.6%	0.4%	2.2%	3.9%	47.5%	42.5%
	L Rfree	15.4%	22.8%	24.5%	22.6%	4.4%	11.9%	4.8%	0.2%	51.0%	42.5%
	L St.G	17.8%	25.2%	23.3%	23.6%	2.7%	2.1%	1.4%	9.0%	54.8%	40.2%
	L West	24.4%	36.5%	12.0%	19.2%	3.6%	0.5%	4.9%	5.6%	55.2%	38.1%
Midlands	Bham	22.1%	29.6%	8.0%	10.8%	1.1%	1.7%	0.8%	1.2%	67.9%	56.7%
	Covnt	11.5%	16.8%	6.4%	5.1%	0.0%	-	0.0%	-	82.1%	77.7%
	Derby	8.3%	12.2%	3.4%	2.9%	1.0%	1.2%	0.3%	1.3%	86.9%	82.3%
	Dudley	0.0%	14.6%	4.0%	5.8%	4.0%	-	0.0%	0.0%	92.0%	78.6%
	Leic	20.1%	20.3%	5.9%	5.2%	0.8%	0.8%	1.4%	0.9%	71.8%	72.9%
	Nottm	2.8%	8.5%	10.6%	7.7%	0.6%	0.7%	1.1%	2.1%	85.0%	81.0%
	Shrew	1.2%	3.9%	1.2%	2.3%	0.0%	3.0%	0.6%	-	97.0%	90.6%
	Stoke	0.0%	5.9%	1.4%	2.3%	1.4%	1.1%	0.0%	1.1%	97.1%	89.5%
	Wolve	28.1%	27.7%	12.5%	10.0%	0.0%	-	0.0%	1.5%	59.4%	60.4%
North East & N Cumbria	Carlisle	10.0%	-	0.0%	0.0%	0.0%	0.0%	0.0%	0.0%	90.0%	100.0%
	Middlbr	7.5%	4.5%	1.1%	0.7%	0.0%	-	1.6%	1.1%	89.8%	93.5%
	Newc	0.7%	4.5%	1.8%	1.2%	0.0%	0.5%	0.4%	0.9%	97.1%	92.9%
	Sund	2.2%	3.3%	1.1%	-	0.4%	0.0%	1.8%	0.9%	94.6%	95.2%
North West	Liv Ain	0.8%	-	4.0%	1.9%	0.8%	0.0%	0.8%	2.7%	93.5%	94.2%
	Liv Roy	1.4%	3.2%	2.1%	3.4%	2.1%	0.6%	2.1%	2.4%	92.4%	90.4%
	M RI	8.1%	13.8%	6.8%	17.4%	1.4%	2.2%	0.0%	-	83.8%	66.6%
	Prestn	9.8%	15.9%	1.5%	0.9%	1.0%	-	0.5%	0.5%	87.3%	82.6%
	Salford	16.3%	17.7%	6.0%	3.7%	0.0%	0.9%	1.1%	1.2%	76.6%	76.5%
	Wirral	1.7%	1.9%	0.0%	1.2%	0.0%	-	1.7%	-	96.6%	96.4%

Table C1: Ethnicity by centre (England) cont.

Region	Centre	Asian		Black		Mixed		Other		White	
		Kidney PREM	UKRR	Kidney PREM	UKRR	Kidney PREM	UKRR	Kidney PREM	UKRR	Kidney PREM	UKRR
South East	Brightn	3.6%	6.1%	1.0%	2.1%	1.8%	1.5%	1.6%	0.9%	91.9%	89.4%
	Kent	5.3%	3.3%	5.0%	2.1%	0.7%	0.7%	1.3%	2.2%	87.8%	91.7%
	Oxford	7.8%	11.2%	7.4%	5.1%	1.3%	2.0%	0.9%	2.8%	82.7%	78.9%
	Ports	5.9%	4.5%	1.7%	1.1%	0.8%	0.9%	0.0%	1.6%	91.5%	91.9%
	Redng	24.2%	23.4%	7.8%	5.5%	0.4%	1.1%	2.5%	5.4%	65.2%	64.6%
South West	Bristol	3.3%	4.0%	5.3%	5.7%	1.3%	-	1.3%	1.8%	88.8%	88.4%
	Dorset	1.9%	1.7%	1.9%	-	1.2%	0.8%	0.0%	0.8%	95.0%	96.4%
	Exeter ¹	0.6%	0.8%	0.9%	0.7%	0.4%	-	0.2%	1.2%	97.9%	97.3%
	Glouc	3.5%	3.9%	0.0%	2.8%	0.9%	-	0.0%	1.7%	95.6%	90.9%
	Plymth	0.0%	-	2.1%	-	0.0%	-	1.0%	1.5%	96.9%	97.4%
	Truro	2.1%	0.0%	0.0%	-	0.7%	-	0.7%	-	96.5%	98.3%
Yorkshire & Humber	Bradfd	34.2%	43.7%	4.2%	2.7%	1.7%	0.0%	0.8%	2.4%	59.2%	51.2%
	Donc	2.1%	2.9%	2.1%	-	0.0%	-	0.7%	1.8%	95.2%	93.2%
	Hull	1.7%	2.3%	0.0%	1.0%	1.7%	-	1.7%	0.8%	94.9%	95.7%
	Leeds	3.6%	16.8%	5.8%	5.4%	0.9%	-	0.4%	1.5%	89.2%	76.1%
	Sheff	4.6%	6.8%	0.0%	2.7%	0.0%	0.9%	0.0%	1.8%	95.4%	87.8%
	York	0.0%	1.6%	0.0%	-	0.0%	0.0%	0.0%	2.4%	100.0%	95.3%

Table C2: Ethnicity by centre (Northern Ireland)

Region	Centre	Asian		Black		Mixed		Other		White	
		Kidney PREM	UKRR	Kidney PREM	UKRR	Kidney PREM	UKRR	Kidney PREM	UKRR	Kidney PREM	UKRR
Northern Ireland	Antrim	0.0%	0.0%	0.0%	-	0.0%	0.0%	0.0%	0.0%	100.0%	100.0%
	Belfast	0.0%	1.8%	0.0%	-	0.0%	-	0.0%	-	100.0%	97.6%
	Newry	1.5%	-	1.5%	-	0.0%	-	0.0%	0.0%	96.9%	99.6%
	West NI	0.8%	-	0.0%	-	0.0%	0.0%	0.0%	0.0%	99.2%	100.0%

Table C3: Ethnicity by centre (Scotland)

Region	Centre	Asian		Black		Mixed		Other		White	
		Kidney PREM	UKRR	Kidney PREM	UKRR	Kidney PREM	UKRR	Kidney PREM	UKRR	Kidney PREM	UKRR
Scotland	Abrdn	0.0%	-	0.0%	-	0.0%	-	0.0%	-	100.0%	-
	Airdrie	0.0%	-	0.0%	-	0.0%	-	0.0%	-	100.0%	-
	D&Gall	0.0%	-	0.0%	-	0.0%	-	0.0%	-	100.0%	-
	Dundee	6.5%	-	3.2%	-	0.0%	-	0.0%	-	90.3%	-
	Edinb	0.0%	-	0.0%	-	1.1%	-	0.0%	-	98.9%	-
	Glasgw	2.7%	-	2.7%	-	1.4%	-	2.7%	-	90.5%	-
	Inverns	0.0%	-	0.0%	-	0.0%	-	0.0%	-	100.0%	-
	Klmarnk	0.0%	-	0.0%	-	0.0%	-	0.0%	-	100.0%	-
	Krkcdy	0.0%	-	0.0%	-	0.0%	-	0.0%	-	100.0%	-

¹2021 data unavailable for Exeter, so previous year's data used in their place.

Table C4: Ethnicity by centre (Wales)

Region	Centre	Asian		Black		Mixed		Other		White	
		Kidney PREM	UKRR	Kidney PREM	UKRR	Kidney PREM	UKRR	Kidney PREM	UKRR	Kidney PREM	UKRR
Wales	Bangor	0.0%	0.0%	0.0%	0.0%	0.0%	-	0.0%	-	100.0%	98.6%
	Cardff	5.7%	6.2%	2.7%	1.2%	0.4%	1.3%	1.1%	0.4%	90.0%	91.0%
	Clwyd	1.2%	-	0.0%	-	0.0%	0.0%	1.2%	0.0%	97.6%	97.3%
	Swanse	0.8%	1.8%	1.1%	-	1.1%	-	0.4%	-	96.6%	97.4%
	Wrexm	0.0%	-	0.0%	-	0.0%	1.7%	0.0%	-	100.0%	96.9%

Table C5: Ethnicity by country

Country	Asian		Black		Mixed		White		Other	
	Kidney PREM	UKRR	Kidney PREM	UKRR	Kidney PREM	UKRR	Kidney PREM	UKRR	Kidney PREM	UKRR
England	10.8%	15.1%	9.2%	9.5%	1.4%	1.5%	77.1%	71.9%	1.6%	2.0%
Northern Ireland	0.9%	1.4%	0.4%	0.5%	-	0.1%	98.7%	97.9%	-	0.2%
Scotland	1.3%	7.2%	0.8%	3.9%	0.5%	0.8%	96.9%	88.0%	0.5%	0.0%
Wales	2.5%	3.9%	1.6%	0.8%	0.5%	0.9%	94.7%	94.0%	0.7%	0.4%
UK	9.7%	13.9%	8.2%	8.6%	1.3%	1.4%	79.3%	74.3%	1.5%	1.8%

Appendix D: Proportion of Kidney PREM responses for each treatment group by centre

Tables D1 to D5 display the number of Kidney PREM responses received as a proportion of those patients receiving treatment at each centre for each treatment modality group. Centres with fewer than seven responses are excluded. In most centres, the UK Renal Registry only collects data for those patients who are receiving kidney replacement therapy, KRT (i.e., have received a transplant or receive haemodialysis or peritoneal dialysis), so Kidney PREM respondents not receiving KRT have been excluded. Kidney PREM data were collected in the autumn of 2023, whereas the UK Renal Registry patient numbers were recorded at the end of 2021. Some participants selected a modality despite no record of any individuals receiving that treatment at their centre, presumably due to the delay between each data collection; these percentages cannot be calculated and are left blank.

In a survey of this type, 10-30% response is generally expected, so response levels above 30% are remarkable and below 10% are low. Caution should be used when interpreting statistics where the absolute number of responses is less than 20 within any particular group, unless the centre is small such that the sample is less than one fifth of the individuals in that centre.

Table D1: Treatment proportion by centre (England)

Region	Centre	Peritoneal Dialysis		Home Haemodialysis		In-centre Haemodialysis		Transplant		Total KRT	
		Kidney PREM N	% of UKRR	Kidney PREM N	% of UKRR	Kidney PREM N	% of UKRR	Kidney PREM N	% of UKRR	Kidney PREM N	% of UKRR
East of England	Camb	2	6.9%	1	4.2%	17	4.8%	11	0.9%	31	1.9%
	Colchr	4	-	0	-	10	6.9%	1	-	15	10.3%
	EssexMS	10	10.8%	4	19.0%	170	39.6%	20	5.7%	204	22.8%
	Ipswi	13	39.4%	0	-	62	44.3%	1	0.4%	76	18.1%
	Norwch	7	15.6%	0	0.0%	36	12.7%	4	0.9%	47	6.0%
	Stevng	1	2.8%	5	12.8%	322	60.9%	16	3.9%	344	33.9%
London	Carsh	16	11.9%	4	14.3%	254	28.7%	34	4.0%	308	16.2%
	L Barts	41	15.9%	16	64.0%	221	20.2%	108	7.9%	386	14.0%
	L Guys	7	10.0%	2	4.9%	56	7.7%	51	3.4%	116	5.0%
	L Kings	18	18.4%	10	29.4%	192	28.6%	4	0.8%	224	16.8%
	L Rfree	30	17.3%	1	10.0%	480	65.3%	158	10.8%	669	28.1%
	L St.G	9	17.0%	1	20.0%	65	20.2%	58	11.9%	133	15.4%
	L West	20	9.3%	7	19.4%	104	8.0%	141	7.0%	272	7.6%
Midlands	Bham	12	4.3%	8	11.6%	228	16.9%	11	0.7%	259	7.8%
	Covnt	2	2.5%	0	0.0%	69	18.6%	4	0.6%	75	6.7%
	Derby	15	22.7%	6	10.9%	123	46.9%	84	27.5%	228	33.1%
	Dudley	2	5.0%	1	10.0%	15	6.8%	3	2.3%	21	5.3%
	Leic	28	20.3%	10	20.8%	604	60.3%	13	0.9%	655	24.8%
	Nottm	11	10.7%	4	14.3%	107	29.5%	28	3.9%	150	12.3%
	Shrew	5	9.8%	4	10.8%	106	57.9%	23	13.5%	138	31.2%
	Stoke	1	0.9%	2	4.9%	42	15.8%	17	3.9%	62	7.3%
	Wolve	2	3.1%	0	0.0%	27	7.8%	0	0.0%	29	4.2%
North East & N Cumbria	Carlis	0	0.0%	0	-	4	3.5%	4	2.5%	8	2.6%
	Middlbr	4	20.0%	5	29.4%	145	41.5%	31	5.4%	185	19.4%
	Newc	15	25.9%	4	22.2%	77	21.9%	87	10.9%	183	14.9%
	Sund	22	59.5%	12	120.0%	160	74.4%	46	16.1%	240	43.9%

Table D1: Treatment proportion by centre (England) cont.

Region	Centre	Peritoneal Dialysis		Home Haemodialysis		In-centre Haemodialysis		Transplant		Total KRT	
		Kidney PREM N	% of UKRR	Kidney PREM N	% of UKRR	Kidney PREM N	% of UKRR	Kidney PREM N	% of UKRR	Kidney PREM N	% of UKRR
North West	Liv Ain	5	22.7%	2	15.4%	115	63.5%	0	0.0%	122	46.2%
	Liv Roy	5	15.6%	4	9.1%	124	33.5%	8	1.1%	141	11.7%
	M RI	4	4.1%	2	2.4%	49	9.6%	11	0.8%	66	3.2%
	Prestn	2	3.6%	3	7.1%	187	37.3%	10	1.3%	202	14.6%
	Salford	3	3.6%	2	6.5%	165	40.0%	7	1.0%	177	14.6%
	Wirral	6	30.0%	0	0.0%	41	21.4%	2	1.0%	49	11.9%
South East	Brightn	28	40.6%	10	33.3%	136	32.1%	98	17.2%	272	24.9%
	Kent	27	37.5%	10	55.6%	241	52.6%	15	2.3%	293	24.6%
	Oxford	5	7.6%	1	5.3%	160	34.6%	22	1.5%	188	9.4%
	Ports	44	48.9%	1	1.2%	52	8.0%	14	1.3%	111	5.7%
	Redng	8	16.0%	0	0.0%	182	59.9%	53	10.3%	243	27.7%
South West	Bristol	20	26.0%	4	22.2%	108	22.7%	9	1.0%	141	9.4%
	Dorset	7	30.4%	4	28.6%	101	33.2%	24	5.4%	136	17.3%
	Exeter	12	14.1%	4	20.0%	305	66.3%	88	16.3%	409	37.0%
	Glouc	4	11.1%	0	-	75	33.2%	17	6.0%	96	17.6%
	Plymth	1	2.9%	0	-	76	46.1%	12	3.4%	89	16.2%
	Truro	5	22.7%	1	20.0%	99	53.8%	14	5.6%	119	25.8%
Yorkshire & Humber	Bradfd	3	8.1%	0	0.0%	79	28.7%	38	9.1%	120	16.3%
	Donc	13	100.0%	2	40.0%	86	49.1%	26	17.8%	127	37.5%
	Hull	2	3.8%	0	0.0%	53	14.7%	2	0.4%	57	6.2%
	Leeds	2	3.8%	3	18.8%	131	22.6%	81	7.1%	217	12.2%
	Sheff	10	12.2%	5	8.9%	40	7.2%	6	0.7%	61	4.1%
	York	0	0.0%	0	0.0%	9	4.7%	1	0.3%	10	1.7%

Table D2: Treatment proportion by centre (Northern Ireland)

Region	Centre	Peritoneal Dialysis		Home Haemodialysis		In-centre Haemodialysis		Transplant		Total KRT	
		Kidney PREM N	% of UKRR	Kidney PREM N	% of UKRR	Kidney PREM N	% of UKRR	Kidney PREM N	% of UKRR	Kidney PREM N	% of UKRR
Northern Ireland	Antrim	0	0.0%	0	0.0%	8	7.0%	0	0.0%	8	2.7%
	Belfast	1	3.7%	4	50.0%	20	15.2%	10	1.3%	35	3.8%
	Newry	2	15.4%	2	-	60	69.8%	2	1.1%	66	23.7%
	West NI	0	0.0%	3	-	45	42.9%	50	22.2%	98	29.2%

Table D3: Treatment proportion by centre (Scotland)

Region	Centre	Peritoneal Dialysis		Home Haemodialysis		In-centre Haemodialysis		Transplant		Total KRT	
		Kidney PREM N	% of UKRR	Kidney PREM N	% of UKRR	Kidney PREM N	% of UKRR	Kidney PREM N	% of UKRR	Kidney PREM N	% of UKRR
Scotland	Abdrn	0	0.0%	0	0.0%	9	4.8%	2	0.5%	11	1.9%
	Airdrie	1	3.4%	0	-	4	2.1%	7	2.5%	12	2.4%
	D&Gall	4	50.0%	0	-	35	66.0%	7	7.6%	46	30.1%
	Dundee	2	12.5%	0	0.0%	6	4.0%	16	6.7%	24	5.8%
	Edinb	13	39.4%	0	0.0%	20	7.1%	23	3.8%	56	6.0%
	Glasgw	6	15.8%	6	60.0%	33	5.7%	15	1.2%	60	3.2%
	Inverns	0	0.0%	0	-	22	23.7%	10	5.8%	32	11.6%
	Klmarnk	1	3.0%	3	18.8%	5	3.6%	4	2.2%	13	3.6%
	Krkldy	0	0.0%	0	0.0%	26	15.9%	2	1.7%	28	9.5%

Table D4: Treatment proportion by centre (Wales)

Region	Centre	Peritoneal Dialysis		Home Haemodialysis		In-centre Haemodialysis		Transplant		Total KRT	
		Kidney PREM N	% of UKRR	Kidney PREM N	% of UKRR	Kidney PREM N	% of UKRR	Kidney PREM N	% of UKRR	Kidney PREM N	% of UKRR
Wales	Bangor	0	0.0%	5	23.8%	27	35.5%	2	1.9%	34	15.7%
	Cardff	9	15.5%	1	2.0%	223	42.0%	18	1.7%	251	14.8%
	Clwyd	19	172.7%	4	-	41	45.6%	15	14.6%	79	38.7%
	Swanse	18	36.7%	11	27.5%	160	39.5%	43	12.0%	232	27.2%
	Wrexm	1	6.3%	1	-	31	31.0%	37	20.4%	70	23.6%

Table D5: Treatment proportion by country

Country	Peritoneal Dialysis		Home Haemodialysis		In-centre Haemodialysis		Transplant		Total KRT	
	Kidney PREM N	% of UKRR	Kidney PREM N	% of UKRR	Kidney PREM N	% of UKRR	Kidney PREM N	% of UKRR	Kidney PREM N	% of UKRR
England	1,577	15.5%	167	13.7%	6,487	30.3%	1,577	4.8%	8,771	14.9%
N Ireland	65	6.0%	9	56.3%	137	25.5%	65	4.6%	215	10.6%
Scotland	86	13.8%	9	19.1%	163	8.9%	86	2.6%	285	5.3%
Wales	120	33.3%	23	20.0%	505	42.0%	120	6.6%	697	21.3%
Total UK	1,849	15.9%	208	14.9%	7,292	29.2%	1,849	4.7%	11,647	16.8%

Appendix E: Characteristics of participants receiving help

Table E1: Characteristics of individuals receiving help to complete Kidney PREM

	Kidney PREM Total	With help (% of all returns)
Age (years)		
<30	447	67 (15.0%)
31-55	3,200	608 (19.0%)
56-74	5,329	1,631 (30.6%)
75+	2,671	1,312 (49.1%)
Ethnicity		
Asian	1,110	473 (42.6%)
Black	939	360 (38.3%)
Mixed	146	58 (39.7%)
White	9,079	2,590 (28.5%)
Other	169	69 (40.8%)
Rather Not Say	204	68 (33.3%)
Treatment		
Transplant	1,849	131 (7.1%)
Peritoneal	620	119 (19.2%)
Haemodialysis	7,500	3,202 (42.7%)
CKD (non-KRT)	1,678	166 (9.9%)
HD Location		
Hospital	3,428	1,437 (41.9%)
Satellite	3,864	1,737 (45.0%)
Home	208	28 (13.5%)
Total	11,647	3,618 (31.1%)

Table E2: Reason for receiving help to complete Kidney PREM by treatment

	Transplant	Centre HD	Satellite HD	Home HD	Peritoneal dialysis	CKD (non-KRT)	Total
Difficulty with English	18 (13.7%)	85 (5.9%)	88 (5.1%)	1 (3.6%)	20 (16.8%)	14 (8.4%)	226 (6.2%)
Technology	45 (34.4%)	428 (29.8%)	409 (23.5%)	5 (17.9%)	41 (34.5%)	78 (47.0%)	1,006 (27.8%)
Eyesight	19 (14.5%)	182 (12.7%)	276 (15.9%)	3 (10.7%)	13 (10.9%)	22 (13.3%)	515 (14.2%)
Health	22 (16.8%)	60 (4.2%)	47 (2.7%)	4 (14.3%)	23 (19.3%)	32 (19.3%)	188 (5.2%)
Disability	9 (6.9%)	13 (0.9%)	11 (0.6%)	3 (10.7%)	2 (1.7%)	4 (2.4%)	42 (1.2%)
Haemodialysis connection	-	631 (43.9%)	888 (51.1%)	11 (39.3%)	-	-	1,530 (42.3%)
Unknown	18 (13.7%)	38 (2.6%)	18 (1.0%)	1 (3.6%)	20 (16.8%)	16 (9.6%)	111 (3.1%)
Total	131	1,437	1,737	28	119	166	3,618

Appendix F: First languages spoken by Kidney PREM participants

Table F1: Full list of languages spoken where English is not the primary language²

Language	Frequency	Language	Frequency	Language	Frequency
Bengali	99	Akan Fante/Twi	22	Albanian	10
Chinese	27	<i>Akan Fante</i>	2	French	34
<i>Cantonese</i>	10	<i>Akan Twi</i>	20	Greek	13
<i>Chinese</i>	14	Igbo	10	Italian	16
<i>Mandarin</i>	3	Somali	30	Polish	33
Gujarati	118	Yoruba	21	Portuguese	31
Hindi	32	Other African	76	Romanian	35
Malayalam	13	<i>Acholi</i>	1	Spanish	22
Nepali	17	<i>Afrikaans</i>	3	Turkish	23
Punjabi	84	<i>Amharic</i>	5	Welsh	54
Sinhala	12	<i>Anaang</i>	2	Other European	64
Tagalog/Filipino	34	<i>Bemba</i>	1	<i>Bosnian</i>	2
<i>Filipino</i>	20	<i>Chichewa</i>	1	<i>Bulgarian</i>	4
<i>Tagalog</i>	14	<i>Edo</i>	3	<i>Cypriot</i>	1
Tamil	37	<i>Eritrean</i>	1	<i>Czech</i>	5
Urdu	138	<i>Ewe</i>	3	<i>Danish</i>	2
Other Asian	73	<i>Ga</i>	1	<i>Dutch</i>	2
<i>Burmese</i>	2	<i>Ganda</i>	3	<i>Flemish</i>	2
<i>Dari</i>	3	<i>Ghanaian</i>	2	<i>Gaelic (Scots)</i>	1
<i>Farsi</i>	3	<i>Ikwerre</i>	1	<i>German</i>	8
<i>Indonesian</i>	2	<i>Kalabari</i>	1	<i>Hungarian</i>	5
<i>Japanese</i>	2	<i>Kaonde</i>	1	<i>Irish</i>	1
<i>Konkani</i>	2	<i>Kikuyu</i>	2	<i>Latvian</i>	1
<i>Kurdish</i>	1	<i>Krio</i>	3	<i>Lithuanian</i>	8
<i>Kutchi</i>	2	<i>Lingala</i>	3	<i>Norwegian</i>	1
<i>Marathi</i>	1	<i>Ndebele</i>	9	<i>Russian</i>	6
<i>Mirpuri</i>	4	<i>Nigerian</i>	2	<i>Slovakian</i>	5
<i>Odia</i>	1	<i>Ora</i>	1	<i>Swedish</i>	4
<i>Pahari</i>	1	<i>Shona</i>	9	<i>Swiss German</i>	1
<i>Pakistani</i>	5	<i>Swahili</i>	5	<i>Ukrainian</i>	5
<i>Pashto</i>	4	<i>Tigrinya</i>	4	Arabic	40
<i>Persian</i>	6	<i>Ugandan</i>	2	Other	14
<i>Sindhi</i>	1	<i>Zulu</i>	1	<i>Aboriginal</i>	1
<i>Sri Lankan</i>	4	<i>Unknown African</i>	6	<i>Creole/Patois</i>	8
<i>Sylheti</i>	2			<i>Guarani</i>	1
<i>Telugu</i>	1			<i>Hebrew</i>	3
<i>Tetum</i>	1			<i>Tawala</i>	1
<i>Thai</i>	6			Unidentified	22
<i>Vietnamese</i>	6				
<i>Unknown Asian</i>	13			Total	1254

² 'Unknown Asian', 'Unknown African' and 'Unknown European' includes those where the country, but not the language, was identified.

Appendix G: Participant partial postcodes

Table G1: Results from univariable regression analyses:

Theme	Coefficient per 10% increase in proportion of deprived LSOAs (95% CI)	p-value
Needling	-0.04 (-0.07, -0.01)	0.004
Access to Kidney Team	-0.03 (-0.05, -0.02)	<0.001
Support	-0.03 (-0.05, -0.01)	0.002
Patient Information	-0.03 (-0.04, -0.01)	<0.001
Privacy & Dignity	-0.03 (-0.04, -0.01)	<0.001
Overall Experience	-0.02 (-0.04, -0.01)	<0.001
Sharing Decisions	-0.02 (-0.04, 0.00)	0.030
Tests	-0.02 (-0.04, -0.01)	0.002
Kidney PREM Scale Score	-0.01 (-0.02, 0.00)	0.020
Communication	-0.01 (-0.03, 0.00)	0.174
Scheduling	-0.01 (-0.02, 0.01)	0.221
How Team Treats You	-0.01 (-0.02, 0.01)	0.263
Transport	0.00 (-0.03, 0.03)	0.842
The Environment	0.02 (0.01, 0.03)	0.002
Fluid & Diet	0.03 (0.01, 0.04)	0.005

Table is sorted by the size of the coefficient, from largest decrease in theme score to largest increase as the proportion of deprived areas increases. Negative differences in scores (as deprivation increases) are highlighted red.

Appendix H: Centre results of additional questions

Table H1: Centre results for 'Who are your kidney clinic letters sent to?'

Region	Centre	Me only		Me and copied to GP		GP only		GP and copied to me		Either		Don't know		Total
		N	%	N	%	N	%	N	%	N	%	N	%	
East of England	Camb	4	12.5%	14	43.8%	1	3.1%	7	21.9%	1	3.1%	5	15.6%	32
	Colchr	3	21.4%	4	28.6%	0	0.0%	2	14.3%	0	0.0%	5	35.7%	14
	EssexMS	23	10.8%	131	61.5%	4	1.9%	29	13.6%	6	2.8%	20	9.4%	213
	Ipswi	10	12.8%	36	46.2%	1	1.3%	16	20.5%	0	0.0%	15	19.2%	78
	Norwch	2	4.1%	25	51.0%	0	0.0%	10	20.4%	3	6.1%	9	18.4%	49
	Stevng	72	21.0%	202	58.9%	8	2.3%	27	7.9%	12	3.5%	22	6.4%	343
London	Carsh	26	7.4%	191	54.4%	4	1.1%	91	25.9%	11	3.1%	28	8.0%	351
	L Barts	43	9.0%	237	49.4%	14	2.9%	121	25.2%	16	3.3%	49	10.2%	480
	L Guys	5	3.4%	63	43.4%	1	0.7%	63	43.4%	4	2.8%	9	6.2%	145
	L Kings	26	12.1%	127	59.1%	7	3.3%	28	13.0%	6	2.8%	21	9.8%	215
	L Rfree	142	17.3%	479	58.3%	15	1.8%	118	14.4%	15	1.8%	52	6.3%	821
	L St.G	6	4.1%	71	49.0%	2	1.4%	44	30.3%	10	6.9%	12	8.3%	145
	L West	26	8.3%	168	53.7%	3	1.0%	88	28.1%	7	2.2%	21	6.7%	313
Midlands	Bham	40	15.2%	130	49.4%	4	1.5%	33	12.5%	8	3.0%	48	18.3%	263
	Covnt	7	9.0%	45	57.7%	2	2.6%	16	20.5%	1	1.3%	7	9.0%	78
	Derby	56	19.7%	129	45.4%	0	0.0%	55	19.4%	3	1.1%	41	14.4%	284
	Dudley	2	8.0%	8	32.0%	3	12.0%	7	28.0%	0	0.0%	5	20.0%	25
	Leic	77	11.6%	419	63.3%	12	1.8%	92	13.9%	5	0.8%	57	8.6%	662
	Nottm	22	12.3%	99	55.3%	2	1.1%	28	15.6%	6	3.4%	22	12.3%	179
	Shrew	9	5.4%	102	61.1%	4	2.4%	33	19.8%	0	0.0%	19	11.4%	167
	Stoke	4	6.0%	26	38.8%	1	1.5%	33	49.3%	1	1.5%	2	3.0%	67
	Wolve	2	6.7%	15	50.0%	3	10.0%	5	16.7%	1	3.3%	4	13.3%	30
North East & North Cumbria	Carlisle	0	0.0%	2	18.2%	0	0.0%	5	45.5%	1	9.1%	3	27.3%	11
	Middlbr	30	16.3%	86	46.7%	3	1.6%	27	14.7%	10	5.4%	28	15.2%	184
North West	Newc	18	6.9%	174	66.9%	1	0.4%	54	20.8%	3	1.2%	10	3.8%	260
	Sund	35	12.7%	172	62.3%	2	0.7%	51	18.5%	0	0.0%	16	5.8%	276
North West	Liv Ain	13	10.5%	51	41.1%	1	0.8%	43	34.7%	2	1.6%	14	11.3%	124
	Liv Roy	14	9.5%	98	66.7%	1	0.7%	17	11.6%	6	4.1%	11	7.5%	147
	M RI	7	10.0%	30	42.9%	6	8.6%	18	25.7%	1	1.4%	8	11.4%	70
	Prestn	20	9.7%	110	53.1%	1	0.5%	41	19.8%	3	1.4%	32	15.5%	207
	Salford	16	8.7%	114	62.3%	3	1.6%	28	15.3%	5	2.7%	17	9.3%	183
	Wirral	3	5.2%	39	67.2%	0	0.0%	9	15.5%	0	0.0%	7	12.1%	58
South East	Brightn	31	6.4%	226	46.6%	12	2.5%	151	31.1%	13	2.7%	52	10.7%	485
	Kent	35	11.5%	128	42.1%	7	2.3%	54	17.8%	9	3.0%	71	23.4%	304
	Oxford	24	10.3%	131	56.5%	2	0.9%	47	20.3%	2	0.9%	26	11.2%	232
	Ports	23	19.5%	48	40.7%	6	5.1%	24	20.3%	6	5.1%	11	9.3%	118
	Redng	22	8.8%	145	58.2%	3	1.2%	61	24.5%	6	2.4%	12	4.8%	249
South West	Bristol	8	5.3%	98	64.9%	2	1.3%	23	15.2%	2	1.3%	18	11.9%	151
	Dorset	10	6.4%	65	41.7%	0	0.0%	65	41.7%	2	1.3%	14	9.0%	156
	Exeter	24	4.5%	279	52.0%	5	0.9%	153	28.5%	8	1.5%	68	12.7%	537
	Glouc	8	7.0%	34	29.6%	7	6.1%	36	31.3%	0	0.0%	30	26.1%	115
	Plymth	3	3.2%	24	25.8%	0	0.0%	54	58.1%	2	2.2%	10	10.8%	93
	Truro	9	6.4%	75	53.2%	0	0.0%	41	29.1%	1	0.7%	15	10.6%	141

Table H1: Centre results for 'Who are your kidney clinic letters sent to?' (cont.)

Region	Centre	Me only		Me and copied to GP		GP only		GP and copied to me		Either		Don't know		Total
		N	%	N	%	N	%	N	%	N	%	N	%	
Yorkshire & Humber	Bradfd	34	27.4%	33	26.6%	7	5.6%	20	16.1%	4	3.2%	26	21.0%	124
	Donc	22	15.4%	61	42.7%	11	7.7%	17	11.9%	3	2.1%	29	20.3%	143
	Hull	9	15.5%	14	24.1%	3	5.2%	8	13.8%	3	5.2%	21	36.2%	58
	Leeds	23	10.6%	112	51.4%	6	2.8%	54	24.8%	4	1.8%	19	8.7%	218
	Sheff	3	4.7%	34	53.1%	0	0.0%	13	20.3%	2	3.1%	12	18.8%	64
	York	0	0.0%	7	63.6%	0	0.0%	2	18.2%	1	9.1%	1	9.1%	11
Northern Ireland	Antrim	0	0.0%	7	77.8%	0	0.0%	1	11.1%	0	0.0%	1	11.1%	9
	Belfast	8	24.2%	12	36.4%	5	15.2%	2	6.1%	1	3.0%	5	15.2%	33
	Newry	10	15.4%	31	47.7%	6	9.2%	6	9.2%	1	1.5%	11	16.9%	65
	Ulster	0	0.0%	2	50.0%	0	0.0%	1	25.0%	0	0.0%	1	25.0%	4
	West NI	35	30.4%	46	40.0%	11	9.6%	6	5.2%	2	1.7%	15	13.0%	115
Scotland	Abrdn	2	14.3%	8	57.1%	0	0.0%	0	0.0%	1	7.1%	3	21.4%	14
	Airdrie	0	0.0%	8	57.1%	1	7.1%	2	14.3%	0	0.0%	3	21.4%	14
	D&Gall	4	6.3%	44	69.8%	0	0.0%	10	15.9%	1	1.6%	4	6.3%	63
	Dundee	5	17.9%	9	32.1%	3	10.7%	5	17.9%	3	10.7%	3	10.7%	28
	Edinb	4	4.7%	49	57.6%	1	1.2%	20	23.5%	1	1.2%	10	11.8%	85
	Glasgw	7	9.6%	30	41.1%	5	6.8%	12	16.4%	2	2.7%	17	23.3%	73
	Inverns	1	3.2%	26	83.9%	0	0.0%	2	6.5%	0	0.0%	2	6.5%	31
	Klmarnk	5	21.7%	5	21.7%	0	0.0%	4	17.4%	1	4.3%	8	34.8%	23
	Krkcdy	5	17.2%	7	24.1%	4	13.8%	3	10.3%	1	3.4%	9	31.0%	29
Wales	Bangor	9	24.3%	10	27.0%	0	0.0%	1	2.7%	0	0.0%	17	45.9%	37
	Cardff	71	27.8%	58	22.7%	15	5.9%	6	2.4%	17	6.7%	88	34.5%	255
	Clwyd	19	24.1%	24	30.4%	6	7.6%	6	7.6%	1	1.3%	23	29.1%	79
	Swanse	32	12.1%	126	47.7%	10	3.8%	42	15.9%	6	2.3%	48	18.2%	264
	Wrexm	16	22.5%	28	39.4%	4	5.6%	1	1.4%	4	5.6%	18	25.4%	71

Table H2: Centre results for 'Have your kidney team talked to you about your wellbeing in the last year? For example: benefits/housing/mental health.'

Region	Centre	No		Yes		Total
		N	%	N	%	
East of England	Camb	24	72.7%	9	27.3%	33
	Colchr	12	85.7%	2	14.3%	14
	EssexMS	133	62.4%	80	37.6%	213
	Ipswi	56	71.8%	22	28.2%	78
	Norwch	33	67.3%	16	32.7%	49
	Stevng	169	49.3%	174	50.7%	343
London	Carsh	262	74.4%	90	25.6%	352
	L Barts	331	69.0%	149	31.0%	480
	L Guys	109	75.2%	36	24.8%	145
	L Kings	123	57.2%	92	42.8%	215
	L Rfree	625	76.1%	196	23.9%	821
	L St.G	97	66.9%	48	33.1%	145
	L West	236	75.2%	78	24.8%	314
Midlands	Bham	104	39.5%	159	60.5%	263
	Covnt	55	70.5%	23	29.5%	78
	Derby	189	66.5%	95	33.5%	284
	Dudley	13	52.0%	12	48.0%	25
	Leic	372	56.2%	290	43.8%	662
	Nottm	91	50.8%	88	49.2%	179
	Shrew	56	33.5%	111	66.5%	167
	Stoke	49	73.1%	18	26.9%	67
	Wolve	24	80.0%	6	20.0%	30
North East & N Cumbria	Carlis	2	18.2%	9	81.8%	11
	Middlbr	117	63.2%	68	36.8%	185
	Newc	173	66.5%	87	33.5%	260
	Sund	156	56.5%	120	43.5%	276
North West	Liv Ain	65	52.4%	59	47.6%	124
	Liv Roy	94	63.9%	53	36.1%	147
	M RI	49	70.0%	21	30.0%	70
	Prestn	109	52.7%	98	47.3%	207
	Salford	122	66.7%	61	33.3%	183
	Wirral	32	55.2%	26	44.8%	58
South East	Brightn	377	77.7%	108	22.3%	485
	Kent	202	66.4%	102	33.6%	304
	Oxford	147	63.4%	85	36.6%	232
	Ports	71	60.2%	47	39.8%	118
	Redng	163	65.5%	86	34.5%	249
South West	Bristol	88	58.3%	63	41.7%	151
	Dorset	108	69.2%	48	30.8%	156
	Exeter	368	68.5%	169	31.5%	537
	Glouc	76	66.1%	39	33.9%	115
	Plymth	53	57.0%	40	43.0%	93
	Truro	98	69.5%	43	30.5%	141

Table H2: Centre results for 'Have your kidney team talked to you about your wellbeing in the last year? For example: benefits/housing/mental health.' (cont.)

Region	Centre	No		Yes		Total
		N	%	N	%	
Yorkshire & Humber	Bradfd	58	46.8%	66	53.2%	124
	Donc	102	71.3%	41	28.7%	143
	Hull	45	77.6%	13	22.4%	58
	Leeds	138	63.3%	80	36.7%	218
	Sheff	46	71.9%	18	28.1%	64
	York	8	72.7%	3	27.3%	11
Northern Ireland	Antrim	3	33.3%	6	66.7%	9
	Belfast	16	48.5%	17	51.5%	33
	Newry	28	43.1%	37	56.9%	65
	Ulster	3	75.0%	1	25.0%	4
	West NI	42	36.2%	74	63.8%	116
Scotland	Abrdn	10	71.4%	4	28.6%	14
	Airdrie	10	71.4%	4	28.6%	14
	D&Gall	35	55.6%	28	44.4%	63
	Dundee	17	60.7%	11	39.3%	28
	Edinb	48	56.5%	37	43.5%	85
	Glasgw	45	61.6%	28	38.4%	73
	Inverns	12	38.7%	19	61.3%	31
	Klmarnk	15	65.2%	8	34.8%	23
	Krkldy	20	69.0%	9	31.0%	29
Wales	Bangor	13	35.1%	24	64.9%	37
	Cardff	152	59.6%	103	40.4%	255
	Clwyd	43	54.4%	36	45.6%	79
	Swanse	148	56.1%	116	43.9%	264
	Wrexm	36	50.7%	35	49.3%	71

Table H3: Centre results for 'Has anyone from your unit talked to you about last year's Kidney PREM report?'

Region	Centre	No		Yes		Total
		N	%	N	%	
East of England	Camb	30	93.8%	2	6.3%	32
	Colchr	12	85.7%	2	14.3%	14
	EssexMS	193	90.6%	20	9.4%	213
	Ipswi	73	93.6%	5	6.4%	78
	Norwch	47	95.9%	2	4.1%	49
	Stevng	278	81.0%	65	19.0%	343
London	Carsh	300	85.5%	51	14.5%	351
	L Barts	422	87.9%	58	12.1%	480
	L Guys	138	95.2%	7	4.8%	145
	L Kings	172	80.0%	43	20.0%	215
	L Rfree	760	92.8%	59	7.2%	819
	L St.G	126	86.9%	19	13.1%	145
	L West	292	93.3%	21	6.7%	313
Midlands	Bham	206	78.3%	57	21.7%	263
	Covnt	75	96.2%	3	3.8%	78
	Derby	266	94.0%	17	6.0%	283
	Dudley	18	72.0%	7	28.0%	25
	Leic	454	68.6%	208	31.4%	662
	Nottm	150	83.8%	29	16.2%	179
	Shrew	158	94.6%	9	5.4%	167
	Stoke	60	89.6%	7	10.4%	67
	Wolve	27	90.0%	3	10.0%	30
North East & N Cumbria	Carlis	9	81.8%	2	18.2%	11
	Middlbr	164	89.1%	20	10.9%	184
	Newc	225	86.5%	35	13.5%	260
	Sund	256	92.8%	20	7.2%	276
North West	Liv Ain	111	89.5%	13	10.5%	124
	Liv Roy	130	88.4%	17	11.6%	147
	M RI	66	94.3%	4	5.7%	70
	Prestn	187	90.3%	20	9.7%	207
	Salford	174	95.1%	9	4.9%	183
	Wirral	55	94.8%	3	5.2%	58
South East	Brightn	469	96.7%	16	3.3%	485
	Kent	270	88.8%	34	11.2%	304
	Oxford	220	94.8%	12	5.2%	232
	Ports	106	89.8%	12	10.2%	118
	Redng	208	83.5%	41	16.5%	249

Table H3: Centre results for 'Has anyone from your unit talked to you about last year's Kidney PREM report?' (cont.)

Region	Centre	No		Yes		Total
		N	%	N	%	
South West	Bristol	143	94.7%	8	5.3%	151
	Dorset	146	93.6%	10	6.4%	156
	Exeter	502	93.5%	35	6.5%	537
	Glouc	109	94.8%	6	5.2%	115
	Plymth	57	61.3%	36	38.7%	93
	Truro	123	87.2%	18	12.8%	141
Yorkshire & Humber	Bradfd	81	65.3%	43	34.7%	124
	Donc	128	89.5%	15	10.5%	143
	Hull	56	96.6%	2	3.4%	58
	Leeds	201	92.2%	17	7.8%	218
	Sheff	62	96.9%	2	3.1%	64
	York	11	100.0%	0	0.0%	11
Northern Ireland	Antrim	6	66.7%	3	33.3%	9
	Belfast	30	90.9%	3	9.1%	33
	Newry	53	81.5%	12	18.5%	65
	Ulster	4	100.0%	0	0.0%	4
	West NI	100	87.0%	15	13.0%	115
Scotland	Abrdn	13	92.9%	1	7.1%	14
	Airdrie	14	100.0%	0	0.0%	14
	D&Gall	56	88.9%	7	11.1%	63
	Dundee	26	92.9%	2	7.1%	28
	Edinb	81	95.3%	4	4.7%	85
	Glasgw	73	100.0%	0	0.0%	73
	Inverns	23	74.2%	8	25.8%	31
	Klmarnk	21	91.3%	2	8.7%	23
	Krkldy	26	89.7%	3	10.3%	29
Wales	Bangor	37	100.0%	0	0.0%	37
	Cardff	225	88.2%	30	11.8%	255
	Clwyd	69	87.3%	10	12.7%	79
	Swanse	222	84.1%	42	15.9%	264
	Wrexm	65	91.5%	6	8.5%	71

Appendix I: Kidney PREM 2022 treatment-level theme scores

Table I1: Median theme scores and interquartile ranges (IQRs) by modality

	CKD (non-KRT)					Peritoneal				
	2023 (n=1617)		2022 (n=1343)		2023 vs 2022	2023 (n=603)		2022 (n=574)		2023 vs 2022
	Medn	IQR	Medn	IQR		Medn	IQR	Medn	IQR	
Access to Team Support	7.00	6.00 - 7.00	7.00	6.00 - 7.00	0.00	7.00	6.33 - 7.00	7.00	6.33 - 7.00	0.00
Communication	6.33	4.50 - 7.00	6.33	4.67 - 7.00	0.00	6.67	5.00 - 7.00	6.67	5.00 - 7.00	0.00
Patient Information	6.25	5.00 - 7.00	6.25	5.20 - 7.00	0.00	6.40	5.60 - 7.00	6.50	5.40 - 7.00	-0.10
Fluid & Diet	7.00	6.00 - 7.00	7.00	6.00 - 7.00	0.00	7.00	6.50 - 7.00	7.00	6.50 - 7.00	0.00
Needling	6.00	4.00 - 7.00	6.00	4.00 - 7.00	0.00	6.50	5.50 - 7.00	7.00	5.50 - 7.00	-0.50
Tests	-	-	-	-	-	-	-	-	-	-
Sharing Decisions	6.33	5.67 - 7.00	6.67	5.67 - 7.00	-0.33	6.67	5.67 - 7.00	6.67	5.67 - 7.00	0.00
Privacy & Dignity	6.33	5.00 - 7.00	6.33	5.00 - 7.00	0.00	6.58	5.33 - 7.00	6.67	5.33 - 7.00	-0.08
Scheduling&Planning	7.00	7.00 - 7.00	7.00	7.00 - 7.00	0.00	7.00	7.00 - 7.00	7.00	7.00 - 7.00	0.00
How Team Treats	7.00	6.00 - 7.00	7.00	6.00 - 7.00	0.00	7.00	6.00 - 7.00	7.00	6.00 - 7.00	0.00
Transport	6.67	5.50 - 7.00	6.67	5.67 - 7.00	0.00	6.67	6.00 - 7.00	6.67	6.00 - 7.00	0.00
The Environment	-	-	-	-	-	-	-	-	-	-
Overall Experience	6.00	5.25 - 6.80	6.20	5.25 - 7.00	-0.20	6.25	5.40 - 7.00	6.25	5.40 - 7.00	0.00
Kidney PREM Score	7.00	6.00 - 7.00	7.00	6.00 - 7.00	0.00	7.00	6.00 - 7.00	7.00	6.00 - 7.00	0.00
	6.33	5.61 - 6.74	6.34	5.64 - 6.76	-0.01	6.45	5.84 - 6.79	6.47	5.84 - 6.82	-0.02

	Home HD					Satellite HD				
	2023 (n=204)		2022 (n=35)		2023 vs 2022	2023 (n=3806)		2022 (n=3067)		2023 vs 2022
	Medn	IQR	Medn	IQR		Medn	IQR	Medn	IQR	
Access to Team Support	7.00	6.33 - 7.00	7.00	6.00 - 7.00	0.00	7.00	6.00 - 7.00	7.00	6.00 - 7.00	0.00
Communication	6.50	5.00 - 7.00	6.33	5.00 - 7.00	0.17	6.00	5.00 - 7.00	6.00	5.00 - 7.00	0.00
Patient Information	6.00	5.00 - 7.00	5.80	4.60 - 7.00	0.20	6.33	5.40 - 7.00	6.25	5.20 - 7.00	0.08
Fluid & Diet	7.00	6.00 - 7.00	7.00	6.00 - 7.00	0.00	7.00	6.00 - 7.00	7.00	6.00 - 7.00	0.00
Needling	7.00	5.50 - 7.00	7.00	5.00 - 7.00	0.00	7.00	6.00 - 7.00	7.00	5.50 - 7.00	0.00
Tests	-	-	-	-	-	6.00	5.00 - 7.00	6.00	5.00 - 7.00	0.00
Sharing Decisions	6.67	6.00 - 7.00	6.67	6.00 - 7.00	0.00	6.67	5.67 - 7.00	6.33	5.67 - 7.00	0.33
Privacy & Dignity	6.67	5.50 - 7.00	6.67	5.67 - 7.00	0.00	6.00	4.67 - 7.00	6.00	4.50 - 7.00	0.00
Scheduling&Planning	7.00	6.50 - 7.00	7.00	6.50 - 7.00	0.00	7.00	6.00 - 7.00	7.00	6.00 - 7.00	0.00
How the Team Treats	7.00	6.00 - 7.00	7.00	6.00 - 7.00	0.00	7.00	6.00 - 7.00	7.00	5.67 - 7.00	0.00
Transport	6.67	5.50 - 7.00	7.00	6.00 - 7.00	-0.33	6.67	5.33 - 7.00	6.67	5.67 - 7.00	0.00
The Environment	-	-	-	-	-	6.00	5.00 - 7.00	6.00	4.67 - 6.67	0.00
Overall Experience	6.00	5.00 - 6.80	6.30	5.80 - 7.00	-0.30	6.75	6.00 - 7.00	6.50	6.00 - 7.00	0.25
Kidney PREM Score	7.00	6.00 - 7.00	6.00	6.00 - 7.00	1.00	7.00	6.00 - 7.00	7.00	6.00 - 7.00	0.00
	6.39	5.74 - 6.76	6.41	5.89 - 6.76	-0.02	6.29	5.65 - 6.73	6.24	5.57 - 6.72	0.04

CKD: Chronic Kidney Disease

KRT: Kidney Replacement Therapy

Medn: Median

IQR: Interquartile range

Table I1: Median theme scores and interquartile ranges (IQRs) by modality (cont.)

	Centre HD					Transplant				
	2023 (n=3354)		2022 (n=2872)		2023 vs 2022	2023 (n=1776)		2022 (n=1606)		2023 vs 2022
	Medn	IQR	Medn	IQR		Medn	IQR	Medn	IQR	
Access to Team Support	7.00	6.00 - 7.00	7.00	6.00 - 7.00	0.00	7.00	6.33 - 7.00	7.00	6.33 - 7.00	0.00
Communication	6.00	4.67 - 7.00	6.33	5.00 - 7.00	-0.33	6.67	5.00 - 7.00	6.67	5.00 - 7.00	0.00
Patient Information	6.25	5.00 - 7.00	6.25	5.00 - 7.00	0.00	6.25	5.33 - 7.00	6.25	5.25 - 7.00	0.00
Fluid & Diet	7.00	6.00 - 7.00	7.00	6.00 - 7.00	0.00	7.00	6.50 - 7.00	7.00	6.50 - 7.00	0.00
Needling	7.00	5.50 - 7.00	7.00	5.50 - 7.00	0.00	6.50	5.50 - 7.00	6.50	5.00 - 7.00	0.00
Tests	6.00	5.00 - 7.00	6.00	5.00 - 7.00	0.00	-	-	-	-	-
Sharing Decisions	6.33	5.50 - 7.00	6.67	5.33 - 7.00	-0.33	6.67	6.00 - 7.00	7.00	6.33 - 7.00	-0.33
Privacy & Dignity	6.00	4.33 - 7.00	6.00	4.00 - 7.00	0.00	6.67	5.33 - 7.00	6.67	5.33 - 7.00	0.00
Scheduling&Planning	7.00	6.00 - 7.00	7.00	6.00 - 7.00	0.00	7.00	7.00 - 7.00	7.00	7.00 - 7.00	0.00
How the Team Treats	7.00	6.00 - 7.00	6.67	5.50 - 7.00	0.33	6.67	6.00 - 7.00	6.67	6.00 - 7.00	0.00
Transport	6.67	5.33 - 7.00	6.67	5.33 - 7.00	0.00	6.67	5.67 - 7.00	6.67	5.67 - 7.00	0.00
The Environment	5.67	4.67 - 6.67	5.67	4.67 - 6.67	0.00	-	-	-	-	-
Overall Experience	6.40	5.60 - 7.00	6.60	5.60 - 7.00	-0.20	6.00	5.20 - 6.60	6.00	5.20 - 6.67	0.00
Kidney PREM Score	7.00	6.00 - 7.00	7.00	6.00 - 7.00	0.00	7.00	6.00 - 7.00	7.00	6.00 - 7.00	0.00
	6.24	5.52 - 6.68	6.28	5.43 - 6.69	-0.03	6.44	5.88 - 6.74	6.44	5.81 - 6.77	0.00

HD: Haemodialysis

Medn: Median

IQR: Interquartile range

Appendix J: Unit abbreviations, satellites and response numbers

These tables display the abbreviation used for each centre and the satellite units for that centre. Numbers in brackets show the amount of Kidney PREMs returned per centre or unit if at least seven responses were received. For most centres, satellite unit responses do not add up to main centre response numbers because at least one unit returned fewer than seven Kidney PREMs. When this is the case, they would not be identified in satellite unit-level data but are included in the centre-level data.

Table J1: England unit abbreviations, satellites and response numbers

Region	Main Centre	Satellite		
East of England	Camb (35)	Dialysis Centre (9) Main Unit (15)		
	Colchr (15)	Clacton (14)		
	EssexMS (217)	Basildon (116) Orsett (30) Southend (40) Chelmsford (31)		
		Ipswi (78)	Main Unit (76)	
		Norwch (52)	Main Unit (51)	
		Stevng (347)	Main Unit (68) St Albans City (67) Harlow (56) Bedford (34) Chiltern Kidney Centre (122)	
	London		Carsh (359)	Coulsdon Dialysis Unit (24) Kingston (9) Carshalton - Main Unit (160) Epsom (27) Farnborough (30) Sutton (17) West Byfleet (24) Croydon (56) Crawley (11)
L Barts (502)			Newham (27) King George (10) Main Unit (355) Queen's Hospital (44) Whipps Cross (66)	
			L Guys (150)	Sidcup (12) Tunbridge Wells (21) Borough (44) Lewisham (7) Main Unit (65)

Table J1: England unit abbreviations, satellites and response numbers (cont.)

Region	Main Centre	Satellite		
London (cont.)	L Kings (228)	Woolwich (21)		
		Bromley (51)		
		Dartford (29)		
		Thamesmead (40)		
		Sydenham (44)		
		Main Unit (37)		
L Rfree (863)		Tottenham Hale (205)		
		Mary Rankin/St Pancras (129)		
		Main Unit (278)		
		Barnet (77)		
		Edgware (174)		
L St.G (148)		Main Unit (66)		
		Champney's Acutes (12)		
		Colliers Wood (23)		
		North Wandsworth (36)		
L West (318)		Hammersmith (195)		
		Main Unit (11)		
		Charing Cross (8)		
		St Charles (18)		
		Watford (13)		
		Hayes (11)		
		Northwick Park (24)		
		Central Middlesex (30)		
Midlands	Bham (270)	Llandrindod Wells (9)		
		Hereford (32)		
		Balsall Heath (38)		
		Solihull (13)		
		Main Unit (25)		
		Sparkhill (7)		
		Worcester (56)		
		Aston Cross (12)		
		Main Unit (18)		
				Woodgate Valley (41)
		Covnt (79)		Stratford (15)
				Main Unit (36)
				Clay Lane (11)
		Nuneaton (10)		
Derby (291)		Main Unit (260)		
		Lichfield (31)		
Dudley (26)		Main Unit (21)		

Table J1: England unit abbreviations, satellites and response numbers (cont.)

Region	Main Centre	Satellite
Midlands (cont.)	Leic (665)	Northampton (49)
		Loughborough (45)
		Hamilton (130)
		Lincoln (42)
		Chandra Mistry Dialysis Unit (27)
		Grantham (27)
		Boston (72)
		Kettering (75)
		Skegness (31)
		Main Unit (98)
Peterborough (69)		
Nottm (182)		Kings Mill (28)
		Main Unit (104)
		Ilkeston (36)
		Centenary Wing (11)
Shrew (168)		Ludlow (9)
		Main Unit (104)
		Telford (55)
Stoke (69)		Main Unit (57)
Wolve (32)		Cannock (8)
		Pond Lane (17)
North East & N Cumbria	Carlisle (11)	Main Unit (9)
	Middlbr (187)	Main Unit (76)
		Darlington (16)
		North Ormesby (47)
		Stockton (41)
		Friarage (7)
	Newc (274)	Alnwick site (18)
		Team Valley (7)
		North Tyneside site (17)
		Main Unit (232)
Sund (279)	Washington (32)	
	Main Unit (197)	
	Durham Treatment Centre (50)	
North West	Liv Ain (124)	Main Unit (16)
		Waterloo (18)
		Aintree (51)
		Southport (39)
	Liv Roy (148)	Main Unit (42)
		Warrington (23)
		Broadgreen (24)
		Halton (19)
		St Helens (40)

Table J1: England unit abbreviations, satellites and response numbers (cont.)

Region	Main Centre	Satellite	
North West (cont.)	M RI (74)	Altrincham (8)	
		Main Unit (22)	
		Stockport (27)	
		Macclesfield (11)	
Prestn (208)		Furness Renal Centre (7)	
		Chorley District General Dialysis Unit (47)	
		John Sagar Renal Centre (55)	
		Clifton Hospital Dialysis Unit (42)	
		Royal Preston Hospital Dialysis Unit (46)	
Salford (186)		Laurie Solomon Renal Centre (10)	
		Wigan (34)	
		Main Unit (69)	
		Bolton (67)	
Wirral (58)		Oldham (11)	
		Main Unit (37)	
South East	Brightn (502)	Chester (21)	
		Worthing (47)	
		Eastbourne (29)	
		Bexhill (24)	
		Main Unit (379)	
	Kent (308)		Crawley (23)
			Margate (22)
			William Harvey (22)
			Maidstone (21)
			Main Unit (175)
	Oxford (238)		Medway (21)
			Dover (47)
			Main Unit (64)
Aylesbury (70)			
Horton (11)			
Ports (121)		Milton Keynes (29)	
		Swindon (44)	
		Wycombe (20)	
		Main Unit (23)	
		Totton (21)	
Redng (251)		Bognor Regis (15)	
		Basingstoke (11)	
		Fareham Home Therapies Hub (39)	
		Main Unit (166)	

Table J1: England unit abbreviations, satellites and response numbers (cont.)

Region	Main Centre	Satellite	
South West	Bristol (153)	Main Unit (33)	
		Weston-super-Mare (43)	
		South Bristol (22)	
		Cossham (19)	
		Brunel/Bright (33)	
	Dorset (163)	Bournemouth (32)	
		Poole (27)	
		Main Unit (89)	
		Yeovil (15)	
	Exeter (542)	Main Unit (217)	
Heavitree (97)			
Barnstaple (52)			
South Devon (106)			
Honiton (37)			
Bridgwater (28)			
Glouc (115)	Severn (35)		
	Main Unit (79)		
Plymth (96)	Plymouth Dialysis Unit (45)		
	Main Unit (37)		
Truro (142)	Bodmin (32)		
	Aubrey Williams (28)		
	Main Unit (82)		
Yorkshire & Humber	Bradfd (124)	Main Unit (121)	
		Donc (145)	Dearne Valley (24)
			Bassetlaw (39)
	Main Unit (82)		
	Hull (60)	Scunthorpe (12)	
		Main Unit (44)	
	Leeds (224)	Huddersfield (9)	
		Pontefract (24)	
		Seacroft Ward B (23)	
		Seacroft R & S (59)	
Main Unit (92)			
Calderdale (14)			
Sheff (66)	Main Unit (39)		
	Chesterfield (8)		
	Peter Moorhead Dialysis Unit (10)		
York (12)	Main Unit (8)		

Table J2: Northern Ireland unit abbreviations, satellites and response numbers

Region	Main Centre	Satellite
Northern Ireland	Antrim (9)	Main Unit (9)
	Belfast (35)	Main Unit (35)
	Newry (66)	Main Unit (66)
	Ulster (4)	
	West NI (119)	Main Unit (91) Londonderry (28)

Table J3: Scotland unit abbreviations, satellites and response numbers

Region	Main Centre	Satellite
Scotland	Abrdn (15)	Main Unit (9)
	Airdrie (14)	Main Unit (14)
	D&Gall (64)	Main Unit (54) Stranraer (10)
	Dundee (31)	Perth (9) Main Unit (22)
	Edinb (89)	Borders General (12) Main Unit (65) St John's (7)
	Glasgw (74)	Stobhill (24) Victoria (17) Forth Valley (7) Main Unit (19)
	Inverns (32)	Main Unit (24)
	Klmarnk (24)	Main Unit (20)
	Krkldy (31)	Queen Margaret (15) Main Unit (13)

Table J4: Wales unit abbreviations, satellites and response numbers

Region	Main Centre	Satellite
Wales	Bangor (38)	Main Unit (38)
	Cardff (263)	Newport (33)
		Pontypool (27)
		Main Unit (26)
		Llantrisant (64)
		Cardiff North (77) Cardiff South (35)
	Clwyd (84)	Main Unit (84)
	Swanse (269)	Carmarthen (23)
		Aberystwyth (13)
		Haverfordwest (29) Main Unit (204)
Wrexm (73)	Main Unit (44)	
	Mold (25)	