

# Transforming the future of rare and hereditary kidney diseases

Dr Aisling McMahon



# Our research portfolio.

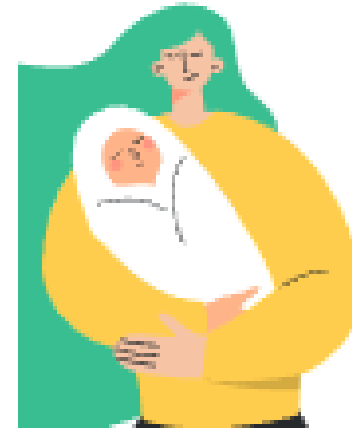
- **Discovery science is at our core** funding lab studies through to clinical trials.
- **We create powerful partnerships** with academics, charities, industry partners and others to create multi-disciplinary networks and data driven evidence.
- **We invest in world-leading talent** with fellowships and grants, including new nurse and pharmacy led awards.
- **We invest in translational and implementation science, med-tech and start-up innovations** to make it count for patients.
- **Most importantly, the patient voice is at the centre of everything we do.**

**We have invested >£71m in research over the last ten years.**

**Paediatric and rare diseases**

**Over 100 awards**

**>£17 million**



### 3 key initiatives in paediatric, rare and hereditary disease research



**RaDaR is closely linked and a key partner**

# PKD Partnership



A 'one stop shop' to accelerate discoveries and transform treatments and patient outcomes.



## Efficiencies

- Expedite clinical trial recruitment
- Optimise all data – current and new, utilise AI/Machine learning and new technologies
- Catalogue existing PKD Research Assets in the UK & Internationally

# Clinical Trials Accelerator and linked biobank



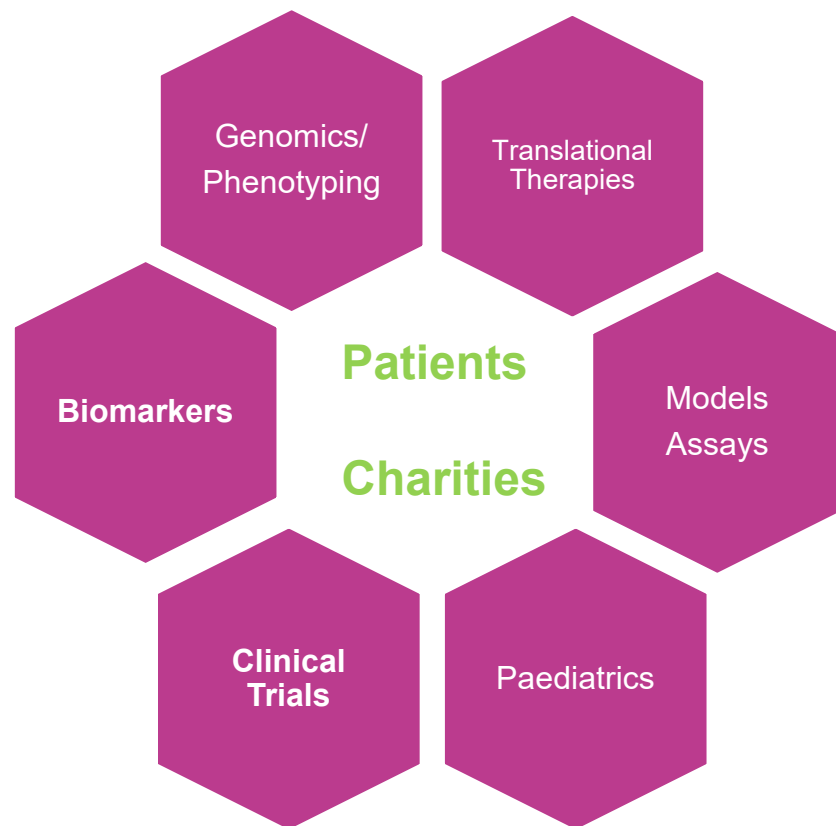
**RaDaR**  
National Registry of Rare Kidney Diseases

- Develop research-ready sites
- Pre-consented cohorts with linked follow-up data
- Diversity and inclusivity – balanced patient recruitment
- Equity of access to trials
- World-leading biobank



**NURTURE**  
National Unified Renal Translational Research Enterprise

# Research theme specific subgroups



- ✓ Increase collaboration
- ✓ Build on current developments
- ✓ Shared knowledge and expertise
- ✓ Avoid duplication
- ✓ Increased chance of securing future grants
- ✓ Leverage new opportunities

Please get in touch if you are interested in joining!  
[lesleywoolnough@kidneyresearchuk.org](mailto:lesleywoolnough@kidneyresearchuk.org)

The **hub** aims to:

- **accelerate research**
- **transform early diagnosis**
- **develop specific treatments for the disease**
  - **research has now expanded beyond kidney effects to include hearing loss.**

**Edging closer towards transformational treatments**



**Rare diseases cause around 90% of kidney failure in children.** Treatments are limited and some are unavailable to children

**This needs to change.**

- **The £10.4million centre will unite the research and patient community to transform treatments on a national scale.**
- **All 13 UK paediatric renal sites are collaborating** – important focus on children
- **New trials in the pipeline** – watch this space!



**Rare Kidney Diseases**

In partnership with





# **kidney disease ends here.**

Kidney Research UK is a limited company registered in England.  
Registered charity no. 252892. Scottish charity no. SC039245.  
Registered company no. 905963.

T: 0300 303 1100 | E: [supportercare@kidneyresearchuk.org](mailto:supportercare@kidneyresearchuk.org) | [www.kidneyresearchuk.org](http://www.kidneyresearchuk.org)