

# Transform AKC- For the best patient experience



## **Summit Update**

Pilot site unit name : Nottingham University Hospitals

# Area for improvement

*(& why are you focussing on that?)*

- Measuring symptoms
- Symptoms management
- Measuring frailty and progression of frailty – Review of RRT choice
- Overall aim to improve patient experience

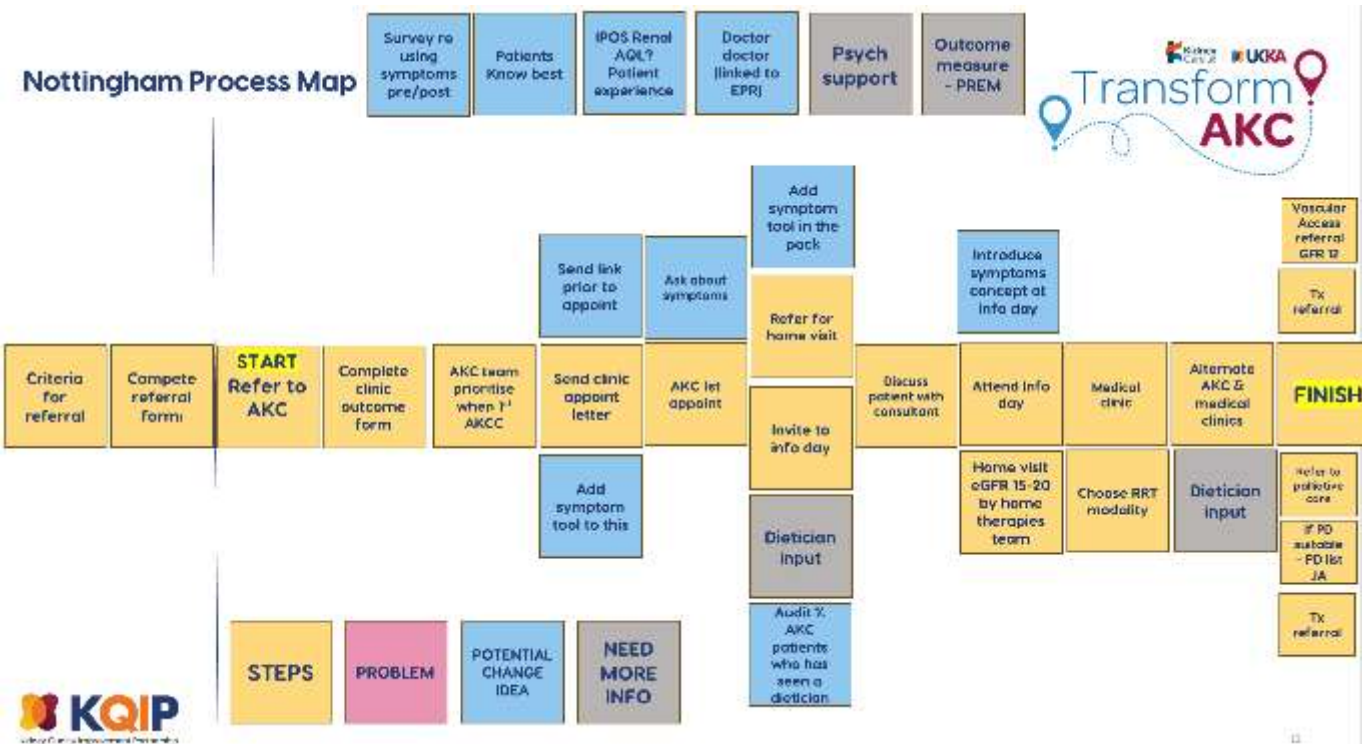


# Learning so far...Stakeholder Map



# Taking action: what we have done

*(This is what we are going to start doing, ie training needs for team & this is how we are going to measure it).*



## What have we done so far

- Reviewing AKC referral forms to include frailty scoring
- Reviewing clinic letter template to also include KFRE
- Agreeing a symptom monitoring tool to use
- Symptom monitoring and tracking
  - Involvement of palliative care
  - Managing symptom management pathway

# Taking action: what we have done

*(This is what we are going to start doing, ie training needs for team & this is how we are going to measure it).*



## What are the next steps

- Improving completion of frailty scoring - monitoring throughout pathway
- Introducing an opportunity to discuss RRT options if change in score identified
- Trial the symptom scoring tool (from Derek) in new patient AKC clinics:
  - Is it useful?
  - How does it impact on running the clinic?
- Develop SOP to structure management of symptoms ie signposting, kidney beam,



# Patient education

(any changes made to patient education since 3 Dec event)

